




Meyer, Reliable Choice



MEYER OPG 2D PRO SERIES



- Hefei Meyer Optoelectronic Technology Inc.
-  Address(manufacturing site)
No.668 West Wangjiang Rd, High-tech Industry Development Zone, Hefei, Anhui Province,China
 -  Mailbox
info@meyermedical.com.au
 -  Website
<https://meyermedical.com.au>

The products illustrated in this brochure reflect knowledge at the time of printing. Meyer accepts no liability for any deviations from the illustrations including color, shape, print error or any other errors, and reserves all rights to make changes to the brochure at any time, or to discontinue the products described herein without notice or obligation. Contact local Meyer representative for the most updated information.

© 2023 Hefei Meyer. All rights reserved.



Smart Design and Configurations

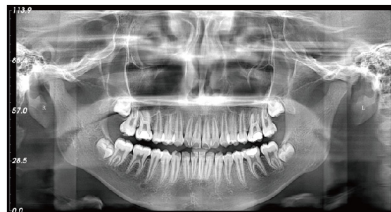
Experience Efficiency Precision and Reliability

ESSENTIAL FOR DENTISTS IN EVERYDAY PRACTICE

MEYER OPG 2D PRO offers simplicity, quality and accurate dental imaging designed for everyday needs. It provides high quality and high-resolution panoramic images ensuring diagnostic accuracy complete with intelligent solutions.



FUNCTIONS



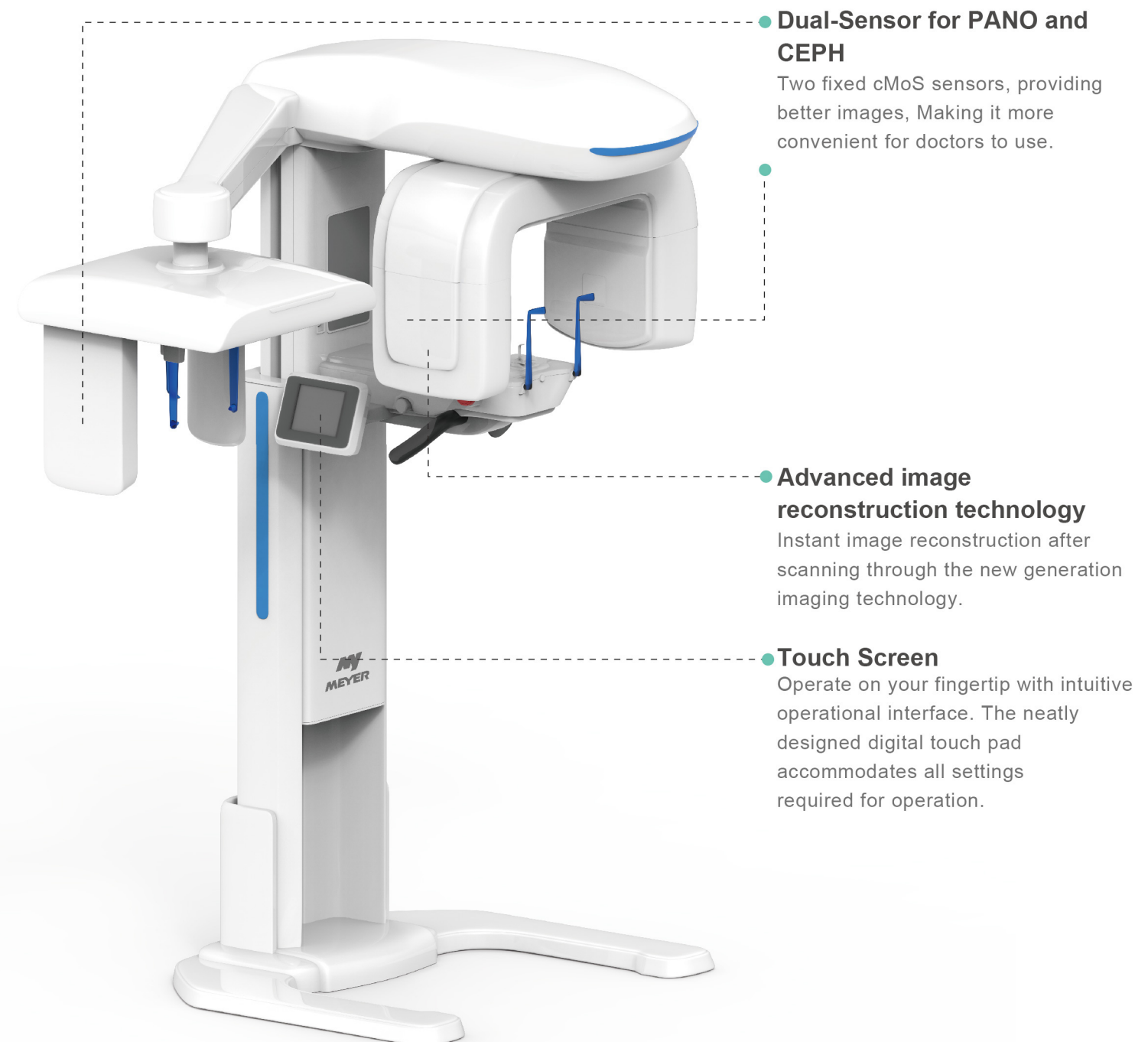
Pano

The HD image enables excellent performance in assisting clinical detection and diagnosis of problems related to the entire dentition, jaw and TMJ's.



Ceph

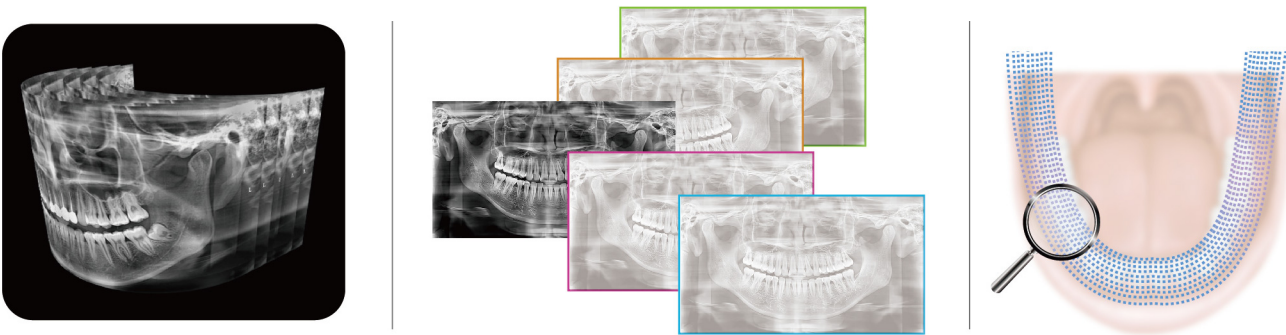
It also allows Ceph images to meet more clinical needs, including orthodontics planning, measurement of teeth, and identification of maxillofacial fractures.





AI Multi-layer Panoramic Scan

Intelligent AI Solutions for Superior Image Quality



Multi-layer slices to generate panoramic images.



Three selectable dental arch forms, tailored to different types of patients.

Each patient has a unique dental arch curve. Our machine offers three selectable dental arch forms while also intelligently matching the patient's dental arch form to acquire optimal imaging results.

Auto Focus AI

Utilizing multi-layer slice imaging, AI automatically selects the optimal region, applies auto focus, and performs image fusion.

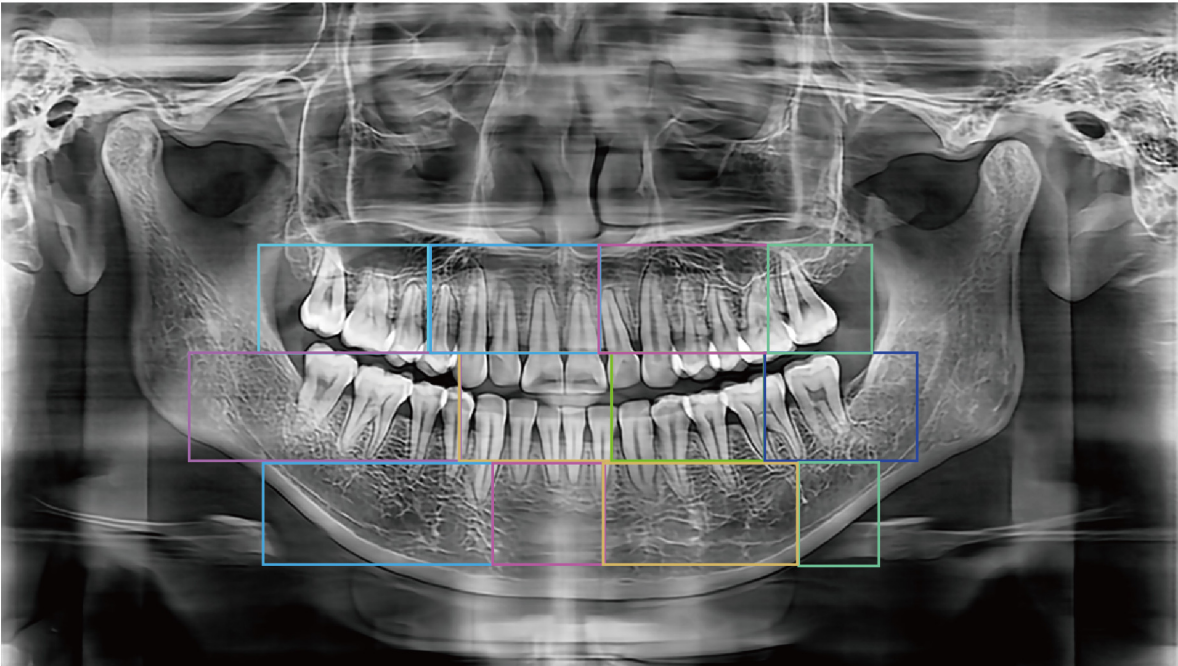
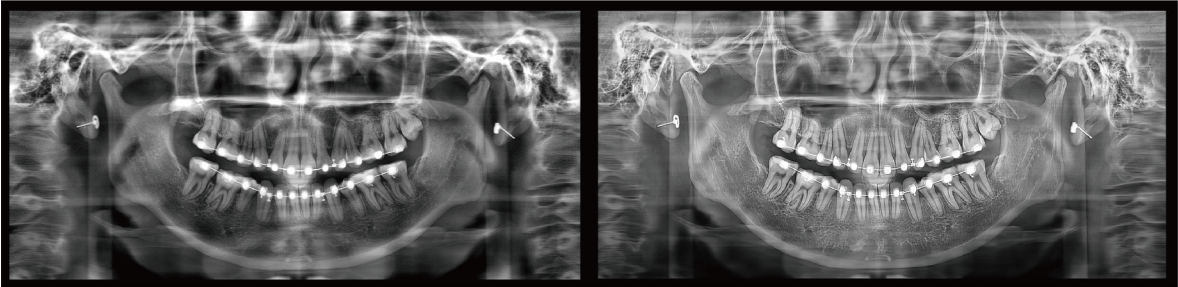


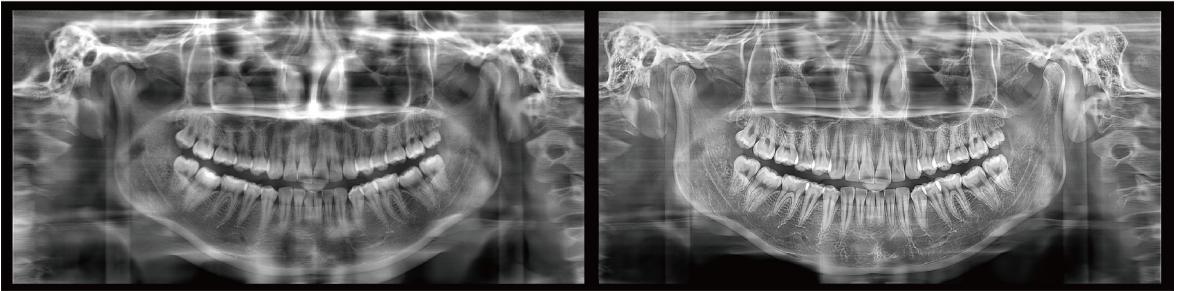
Image Enhancement AI

PD "Pure Detail" Panoramic Post-processing Algorithms.



Original image

PD image



Original image

PD image

We comprehensively integrate sustainability into our system

“Green design” in our research process utilises sustainable technology, materials, and crafting to minimise waste generation while maintaining high quality and efficiency. For example, the implementation of 3D printing in designing new products has substantially shortened our research period; the substitution of welding and polishing with bending and riveting is more environmentally friendly.

“Green manufacture” is also part of the intelligent manufacturing system developed by Meyer, including the internalisation of the automated lacquering technique to minimise waste generation, equipment technology upgrade to reduce emission, and increasing application of automation in factories to reduce labour while promoting product stability and consistency.

MEYER

Technical Specifications

Model	SS-X9010DPro-2DE	SS-X9010DPro-2D
Function	Pano & Ceph	Pano
Net Weight	260 KG	220 KG
Voltage	AC230V±10%	
Focal Spot	0.5 x 0.5mm	
Total Filtration	2.7mmAL	
Tube Voltage	60~90kV	
Tube Current	2~10mA	
X-ray Exposure Time	Pano~17secs Ceph~12secs	

